

June 8, 2025

JOURNEY LUTHERAN

Whoever you are, However you come, You are welcome here.



THE WEEK AHEAD

Sunday, June 8th

10am Worship at Riverside Park,

Rain Location: Our Savior's Lutheran, La Crosse

11:15am Picnic at Riverside

Tuesday, June 10th

9:30am Worship Team Meeting

Wednesday, June 11th

10:15am Outreach Meeting

Thursday, June 12th

9am Ladies Card Club

Sunday, June 15th - Father's Day

9:30am Worship

10:30am Fellowship Time

Google Calendar Link

2703 Sand Lake Road
Onalaska, Wisconsin 54650

Church Office - (608) 783 1892
journeylutheran@gmail.com

Office Hours

Tues/Wed/Thurs 9:00-3:30

Pastor Luci:

journeypastorluci@gmail.com

**CLICK HERE TO SIGN UP TO BE A
SONG LEADER, GREETER, READER,
OR COMMUNION SERVER**

Journey will not have worship this Sunday, June 8. Instead we will be doing a Synod-wide worship at Riverside Park.

Rain Location: Our Savior's Lutheran, La Crosse

Worship In The Park

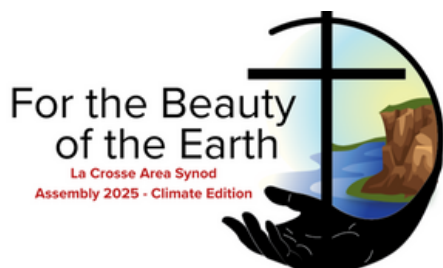
Join us for an outdoor
worship service!

What to Expect:

- ✓ **9:00 am** Choir Practice
- ✓ **10:00 am** Pentecost Worship
with Communion
- ✓ **11:15 am** Picnic – Freewill Offering

 **Sunday
June 8, 2025**

 **Riverside Park
La Crosse, Wisconsin**



Synod Assembly Choir

[Click Here for Rehearsal Videos](#)



The choir is for everyone. Whether you are attending Synod Assembly as a voting member, volunteer or just an enthusiast who likes pop-up choirs. If you have questions, reach out to Choral Director [Pete Engh](#) at: peterengh1983@gmail.com

Rehearsals:

- Friday June 6:4:45 pm @ Westby Coon Prairie Lutheran Church in Sanctuary
- Sunday June 9:9:00 am @ Riverside Park Bandstand

Performance

- Sunday June 9:During 10:00 am Worship at Riverside Park, La Crosse

Coffee Sponsor

Thank you to this week's Coffee Sponsor:
Renee Monti, celebrating Sophia's birthday!

&

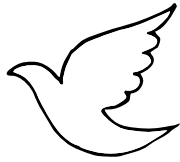
**John & Lori Clements, celebrating their
anniversary!**



Happy **BIRTHDAY**

June 11th - Tom Stowers

*June 12th - Bradley Compton, Jonathon Compton,
Hanna Lazarescu*



Prayer Requests

Members:

John Clements

Dave Denson

Mortgage Update

Monthly Mortgage Payments: \$4,000

On track to pay off by Aug. 2026

Two weeks ago we received a challenge gift of \$2,000 that will be unlocked when we secure enough funds to cover our mortgage payments through mid-August, at which point the challenge gift will cover the remaining of our August payment. Since the challenge gift was presented we have received enough to cover both June and July payments in full and are currently \$1,565 away from unlocking the challenge gift.

In addition, we have been able to pay ourselves back \$3,000 of the \$4,000 we borrowed.

Mortgage reductions gifts can be given by:

A personal check with "mortgage reduction" in memo, dropped in the offering plate at the Welcome Table on Sundays or sent to Journey at 2703 Sand lake Road Onalaska WI 54650.

or **Online Here**

May Care Bear

During the month of May Journey raised **\$953.45** for
Wafer Food Pantry.

Thank you for your generosity!



Summer Kindness Activity

Please be sure to pick up your kindness hands! You can add color and your own creative flair to the hands. Then throughout the summer look for instances of kindness, love or hope and snap a picture including the kindness hands. Share those pictures with the office so the congregation can enjoy a little extra happiness this summer.



Upcoming Service Project

Matthew 25:35-40 tells us that we can show our love for God by caring for others, especially those in need, as every act of kindness towards others is seen as an act of kindness towards Him. The Outreach/Service team wants to show Journey's love by collecting supplies for the La Crosse Jail Ministry. This ministry works to connect current and former inmates to one of the faith communities that serve in the La Crosse County Jail. The ministry also has a group of volunteer mentors that help the inmates upon being released with the transition to regular life. La Crosse Jail Ministry provides supplies to inmates while in jail, along with warm clothes upon release.

Current items needed include:

- **Shoes (all sizes) gently used is fine but must be clean**
- **Sports Bras- new**
- **Underwear for women- new**
- **Puzzles- gently used or new in box, no plastic bags**
- **Current paperbacks- gently used or new, fiction, non-fiction or spiritual**
- **Magazines- gently used**
- **Adult coloring books**
- **Sweatpants, t-shirts of all sizes (can be gently used but must be clean)**
- **Backpacks- can be gently used**



We will collect items through the end of June. Please place them in the baskets on the bookshelf at the office entrance.

Thank you for supporting this ministry!

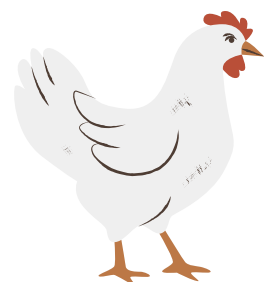


Chicken Q & Blood Drive

Our next Chicken Q/Blood Drive will be on **Tuesday, July 8.**

Buy tickets starting this Sunday!

[Sign up here to donate blood!](#)



Food Pantry Donations Needed

Food pantries see an increase in need during the summer due to kids being home from school. This summer is seeing an even bigger increase in need with the drop in federal funding to food pantries. The Outreach Team will be highlighting 3 different items each week that are needed at the Onalaska Regional Food Basket. The Food Basket serves people in the following communities: Onalaska, Holmen, West Salem, Galesville, Ettrick, French Island, Trempealeau, Melrose and Mindoro.



This week's needed items are:

- Peanut Butter
- Canned Meats
- Spaghetti Sauce



If you are able, please try to add one or more of these items to your cart as you are doing your weekly grocery shopping. **Since we are not meeting at Journey this Sunday, we will collect these items for two weeks (until June 22).** Donations can be placed in the grocery cart at the office entrance. Let's try to fill the grocery cart at Journey!

Landscaping Update

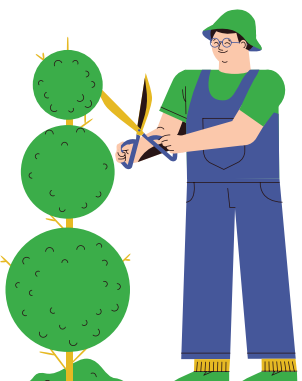
The profit from my plant sale was \$424.10. Thank you so much Journey!

We were able to purchase the mulch we needed to refresh this year, and all items needed to redo the entire bed in front of the church. We have enough left to reroute rain gutters and start to plant in the "just mulch" areas adjacent to church entrance ways.

Many of the plants in our new bed were obtained from Jung Nursery and donated by Tuenis Zondag. Thank you so much!

The beautiful cross planter in the nook by the office entrance was donated by Dave Pehl. Thank you, and yes....I will get it planted in soon!!

Lastly, a heartfelt thank you to all those that donated their time, energy, tools, trailers on our 5/31 work day. This project could not have been completed without each and everyone of you. A special thanks to Max and Henrik Chodur for helping finish all the mulching on Monday 6/2.



Being a part of this Journey community is indeed a blessing!

Janna Miles-Miller

