

April 14th 2024

# JOURNEY LUTHERAN

*Whoever you are, However you come, You are welcome here.*



## THE WEEK AHEAD

### Sunday, April 14th

8:30am Choir Rehearsal

9:30am Worship

10:30am Fellowship Time & Sunday School

10:40am Journey Tots

### Monday, April 15th

6:30pm RIC Meeting

### Wednesday, April 17th

4:30pm Ruby's Pantry

### Saturday, April 20th

9am-2pm Spring Artisan Fair

### Sunday, April 21st

8:30am Choir Rehearsal

9:30am Earth Day Worship

10:30am Fellowship Time & Sunday School

10:30am Earth Day Event



***CLICK HERE TO SIGN UP TO BE A  
SONG LEADER, GREETER, READER,  
OR COMMUNION SERVER***

**[Google Calendar Link](#)**

*2703 Sand Lake Road  
Onalaska, Wisconsin 54650*

*Church Office - (608) 783 1892  
[journeylutheran@gmail.com](mailto:journeylutheran@gmail.com)  
Office Hours*

*Tues/Wed/Thurs 9:00-3:30*

*Pastor Luci - (715) 225 0979  
[journeypastorluci@gmail.com](mailto:journeypastorluci@gmail.com)*

# Ruby's PANTRY

Our next Ruby's Pantry distribution date is **April 17th, 4:30-6pm**. If you want to sign up to volunteer at the distribution you can use the link below or sign up at the back of the sanctuary. Thank you for helping us make this ministry successful!

[Click Here](#) to register as a volunteer with Ruby's Pantry.

[Click Here](#) to sign up to volunteer at our April Ruby's Pantry.

## Journey Lutheran Spring Artisan Show

**April 20th, 2024  
9am-2pm**

**Journey Lutheran Church  
2703 Sand Lake Road, Onalaska**

**Over 30 Artisans  
Schindoggies Food Truck  
Baby Goats  
Hand made Goodies**

**Fundraising Event for the Holmen  
School District Negative Lunch  
Account**

**Lets Bring Down the Debt!!**

**Perfect time to shop for weddings,  
birthdays, teachers or yourself**

**Come down and support locally  
owned small businesses!**



# Green Team Update!



The Green Team is busy planning a fun and educational Earth Day Service! Be sure to join us on Sunday, April 21 for worship and fellowship.

Have you heard of TerraCycle? They have quickly become one of my favorite organizations! TerraCycle's core purpose is to combat the global waste crisis. They have been developing innovative solutions for reuse, recycling and recycled materials for over 20 years.

They offer free recycling for hard-to-recycle trash through sponsorships with brands and retailers. At the Monti household, we recycle applesauce pouches, sauce packets, Swiffer pads (amongst many others) for free all through TerraCycle. When I send in our items to be recycled (using free shipping), I then receive points. These points can be used to donate a monetary value to a variety of non-profit organizations, including Journey Lutheran Church. So recap, through TerraCycle, you can help the earth and earn a little money for Journey!

**Check out their website to learn more and see what items you can start recycling!**



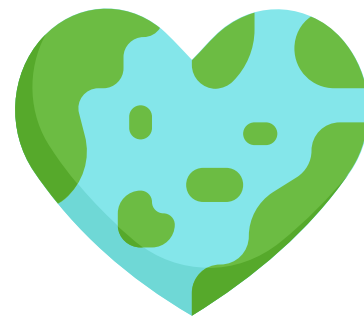
**Green action to try:** Decide not to add any items to the landfill today (or for longer).

Use real cups, cloth napkins, reusable bags for groceries and reusable water bottles.



## Earth Day Worship

Join us on Sunday, April 21st for our special Earth Day worship lead by our own Green Team and the Synod Creation Care Team. Following worship join us in the Fellowship Hall for more learning opportunities and fun activities!



## Coffee Sponsor

Thank you to this weeks coffee sponsor:

**Terry Aakre, celebrating her grandson**

**Edison's 7th birthday! Apologies to last week's**

**coffee sponsor who got skipped, Mary Jo Bersagel,**

**celebrating Dave Bersagel's birthday!**



*Happy*

## BIRTHDAY

*April 14th - John Haese*

*April 15th - Liam Moldenhauer*

*April 17th - Deb Welandar*

*April 18th - Lynn Flogstad, Mary Conger*

*April 19th - Allyson Wozney*



## Date Change!

The date of our next heritage meal has been moved to **Saturday, April 27th!** If you have already signed up and this date does not work for you please email the office to have your name removed from the sign-up list. Thank you for your understanding.

## ALL ARE WELCOME

*Your presence is requested at  
The Journey Heritage Afternoon Tea Event*



**Meal Includes:** a variety of finger sandwiches, scones and crumpets with clotted cream and jam, a selection of dainty desserts, and English tea... a meal fit for a queen



April 27, 2024

(Saturday)

4:00 pm

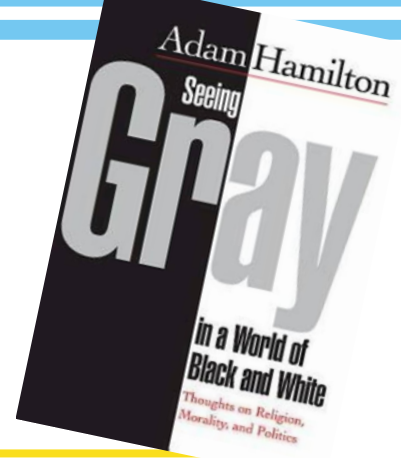
English humor, stories, and short program for your enjoyment, please sign up

## Koinonia Study Group

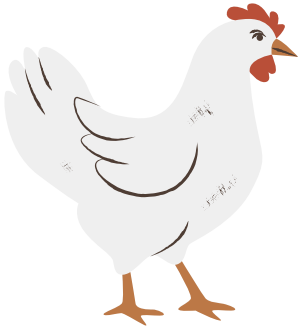
Our Koinonia groups next meeting is on **Monday, May 6th at 8:30am** to discuss the book *Seeing Gray in a World of Black and White* by Adam Hamilton. Available at Barnes & Noble and Amazon.

All are welcome to join this group at any time!

\*Breakfast is included.



## Chicken Q & Blood Drive



Mark your calendars! Back by popular demand, our first Chicken Q of the year will be on **Thursday, May 9th**. Sign up to donate blood and pick up your Chicken dinner on the way out! Tickets will be available for purchase this Sunday, following worship, we encourage you to take tickets to sell to others!

We need volunteers to help out at our Chicken Q, if you are able to volunteer please [sign up here](#).

## Blood Drive

Journey has made an incredible impact through our Red Cross Blood Drives. To be a part of this life-saving impact click the link below to sign up to donate at our next blood drive, **Thursday, May 9th**. Click the volunteer link below if you can help run the Blood Drive.

[Blood Drive sign up](#)

[Blood Drive Volunteer Sign Up](#)



## Journey's Blood Drive Impact



**6 Blood Drives**

**163 Donors**

**148 Units donated**

**444 Lives Saved**

AMERICAN RED CROSS

**BLOOD  
DRIVE**

